



MONTHLY MEMBERSHIP PROGRESS REPORT

District 17 A

Results as of: 02/28/2018

GMT: WILLIAM PHILLIPI

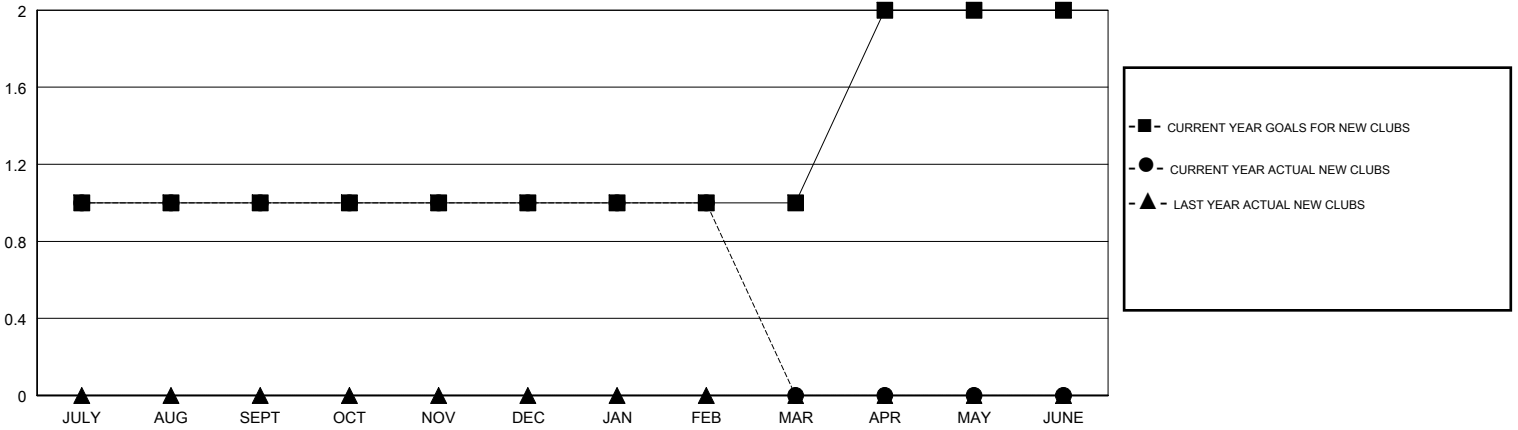
LOCATION KANSAS

GMT CA

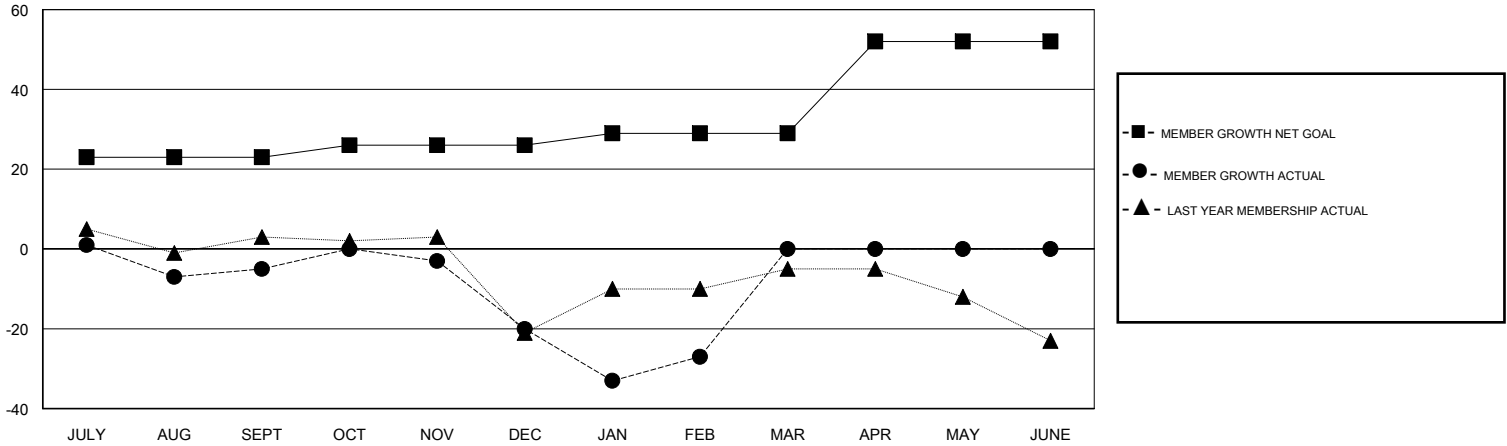
Clubs			
RESULTS FOR 2017-2018			
QUARTER	NEW CLUB GOAL	NEW CLUBS	DROPPED CLUBS
JULY/AUG/SEPT	1	1	1
OCT/NOV/DEC	0	0	0
JAN/FEB/MAR	0	0	1
APR/MAY/JUNE	1	0	0

Members			
RESULTS FOR 2017-2018			
QUARTER	MEMBER GROWTH NET GOAL	MEMBER GROWTH ACTUAL	DROPPED MEMBERS ACTUAL (including transfers)
JULY/AUG/SEPT	23	73	68
OCT/NOV/DEC	3	31	46
JAN/FEB/MAR	3	25	31
APR/MAY/JUNE	23	0	0

GOALS AND ACTUAL NEW CLUBS CUMULATIVE



GOALS AND ACTUAL MEMBERS CUMULATIVE



DROPPED CLUBS: 2	40 CLUBS OF 84 ADDED 1 OR MORE NEW MEMBERS	<u>GENDER DISTRIBUTION</u>	
DROPPED MEMBERS		MALE	1,279 (69.85%)
DECEASED	24	FEMALE	552 (30.15%)
CLUB CANCELLED	1	Women Percentage Fiscal Year Goal: 32%	
OTHER	120	TOTAL FAMILY UNIT MEMBERS	425
TOTAL	145	FAMILY MEMBERS PAYING HALF DUES	216

[CLICK HERE FOR CUMULATIVE MEMBERSHIP DATA](#)